



CTL LEATHER
A Garrett Leather Company

BRUGES

PRESTIGE LEATHER



BRUGES

PRESTIGE COLLECTION



**CULTIVATED
AGED LEATHERS**



vivid violet

A beautiful naturally milled grain, Bruges reflects a cozy and refined patina inspired by the medieval city that bears its name.

sweet apricot



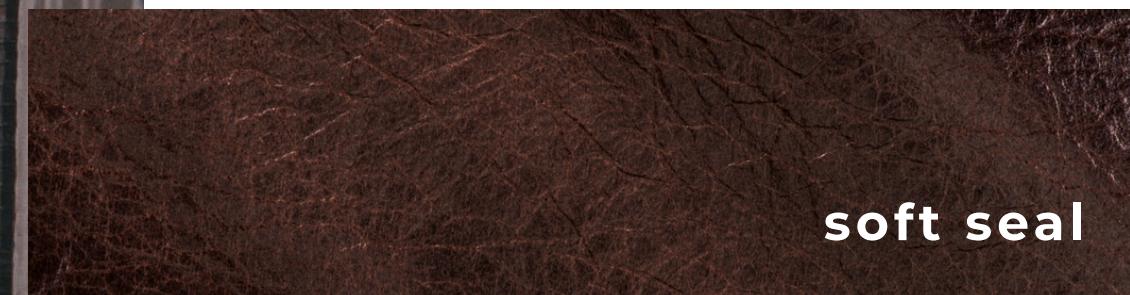
**vermillion
orange**



The energetic color line emanates from an appreciativeness of the past, a love for the present, and enthusiasm for the future. Eye-catching natural tones complement a texture that begs to be touched.



radiant raspberry



soft seal

golden otter



bright
chartreuse

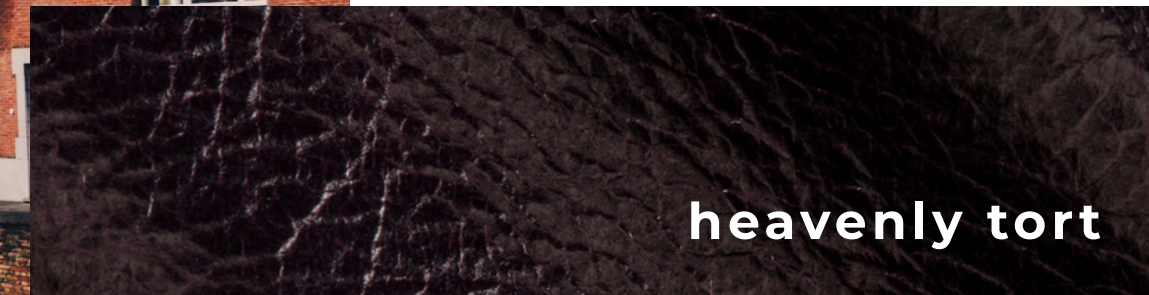


**phantom
black**

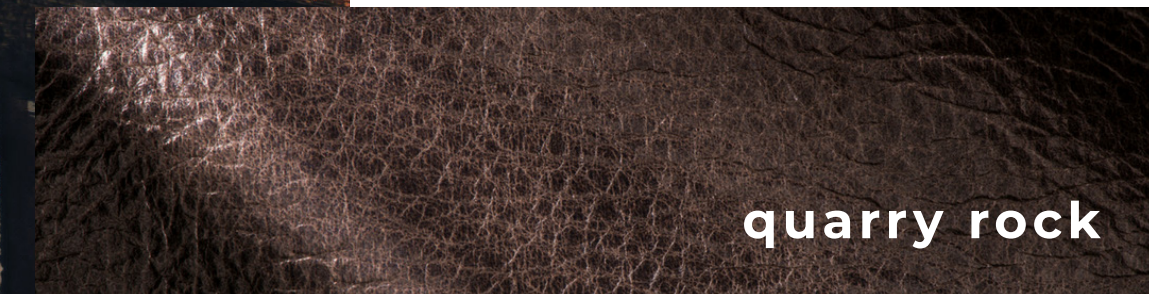


When upholstered, the leather's luxurious nap draws in the light and creates a soft glow.

These mild natural colors can be applied to any market, contemporary to traditional.



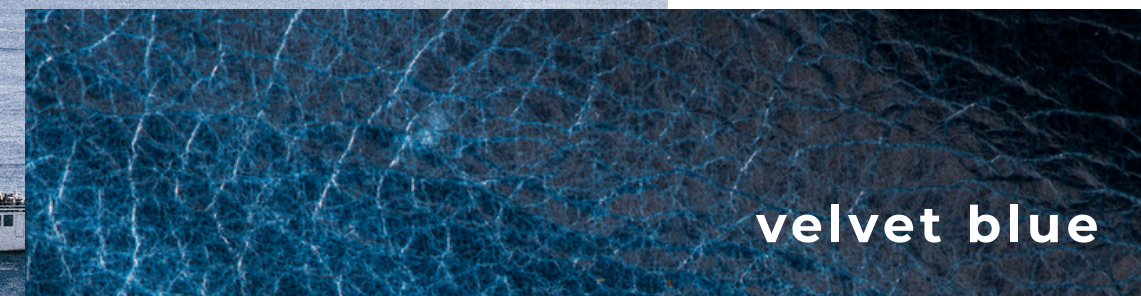
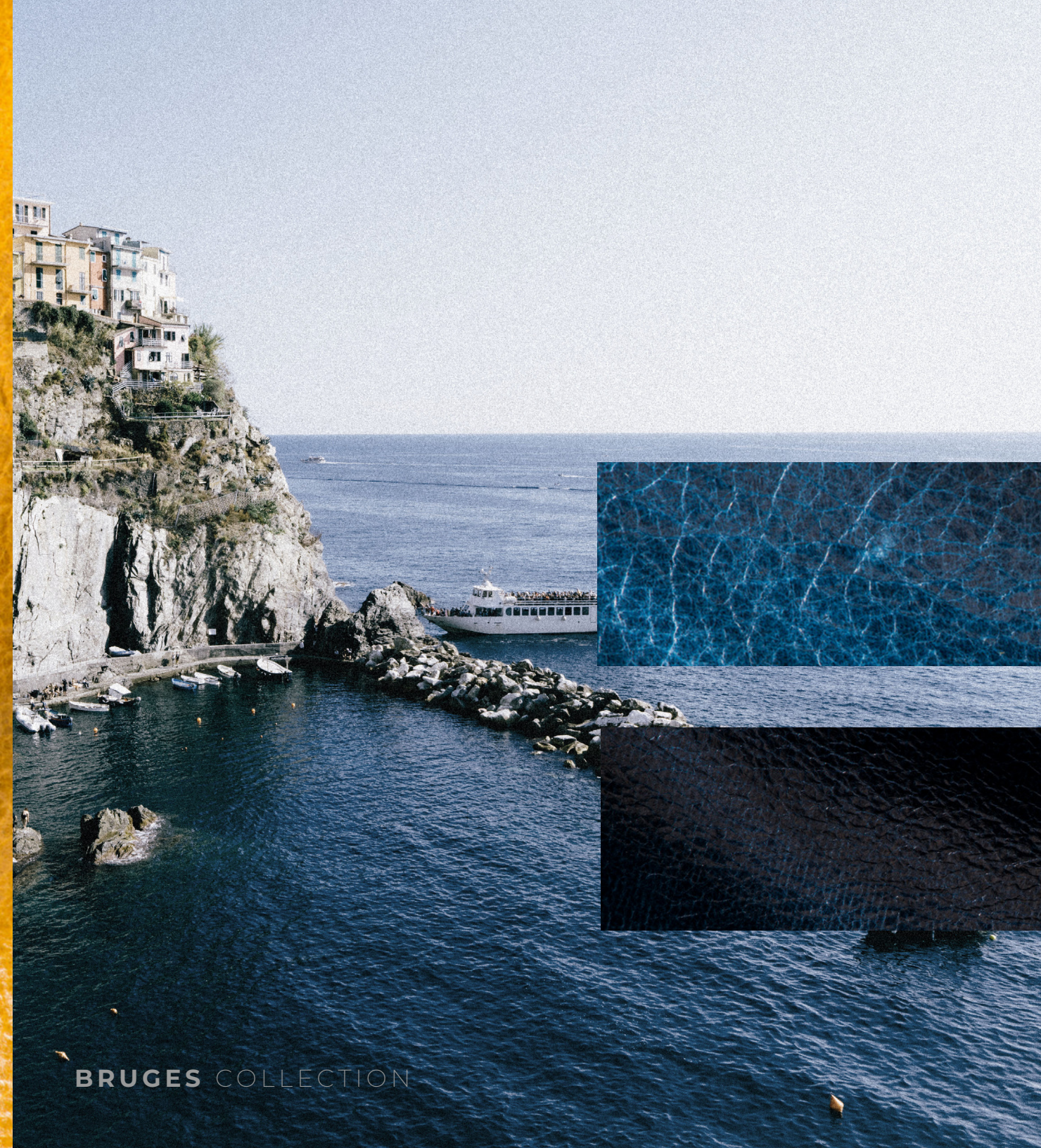
heavenly tort



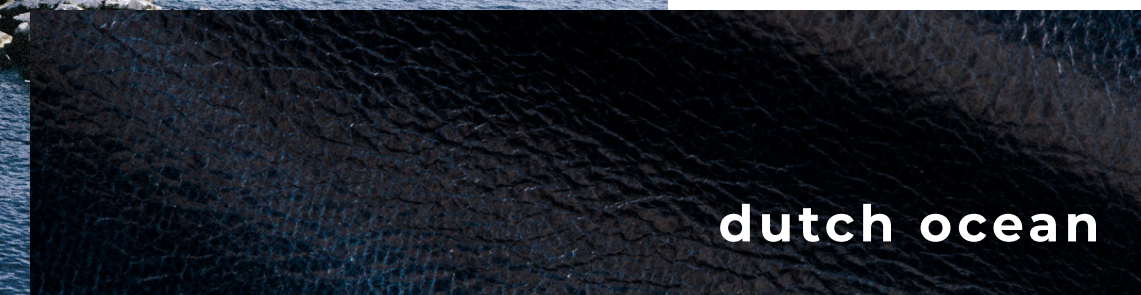
quarry rock



mellow yellow

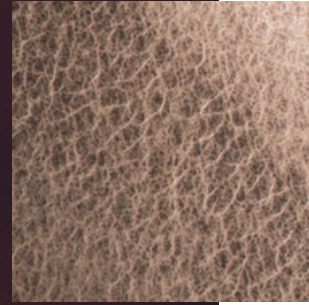


velvet blue

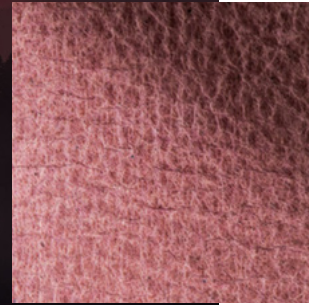


dutch ocean

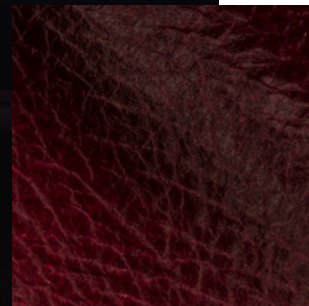
BRUGES COLLECTION



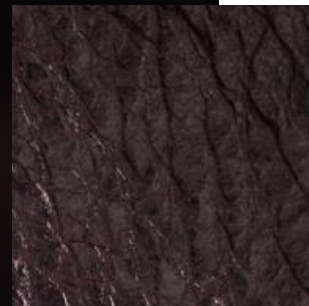
crystal grey



vivid violet



baron russet



potent purple



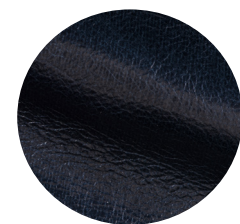
Baron Russet



Soft Seal



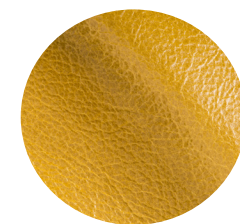
Crystal Grey



Dutch Ocean



Quarry Rock



Mellow Yellow



Golden
Otter



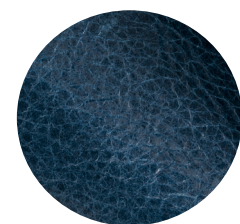
Vermillion
Orange



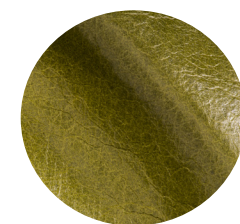
Vivid Violet



Potent
Purple



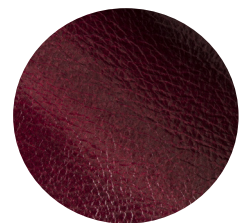
Velvet Blue



Bright
Chartreuse



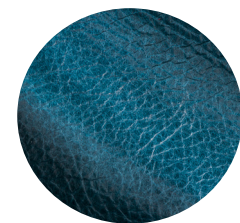
Sour Grape



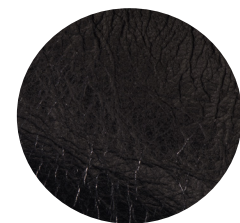
Radiant Raspberry



Heavenly Tort



Brilliant Tide



Phantom Black



Sweet Apricot

Content

Solid, Oil Pull Up

Finish

Aniline, Pull Up

Raw Material

European

Average Hide Size

50 FT2 (4.65m2)

Country of Origin

Italy

Clean

Soft Cleaner

Protect

Protection Cream

Hide Type

Bovine

Configuration

Whole Hide

Grain

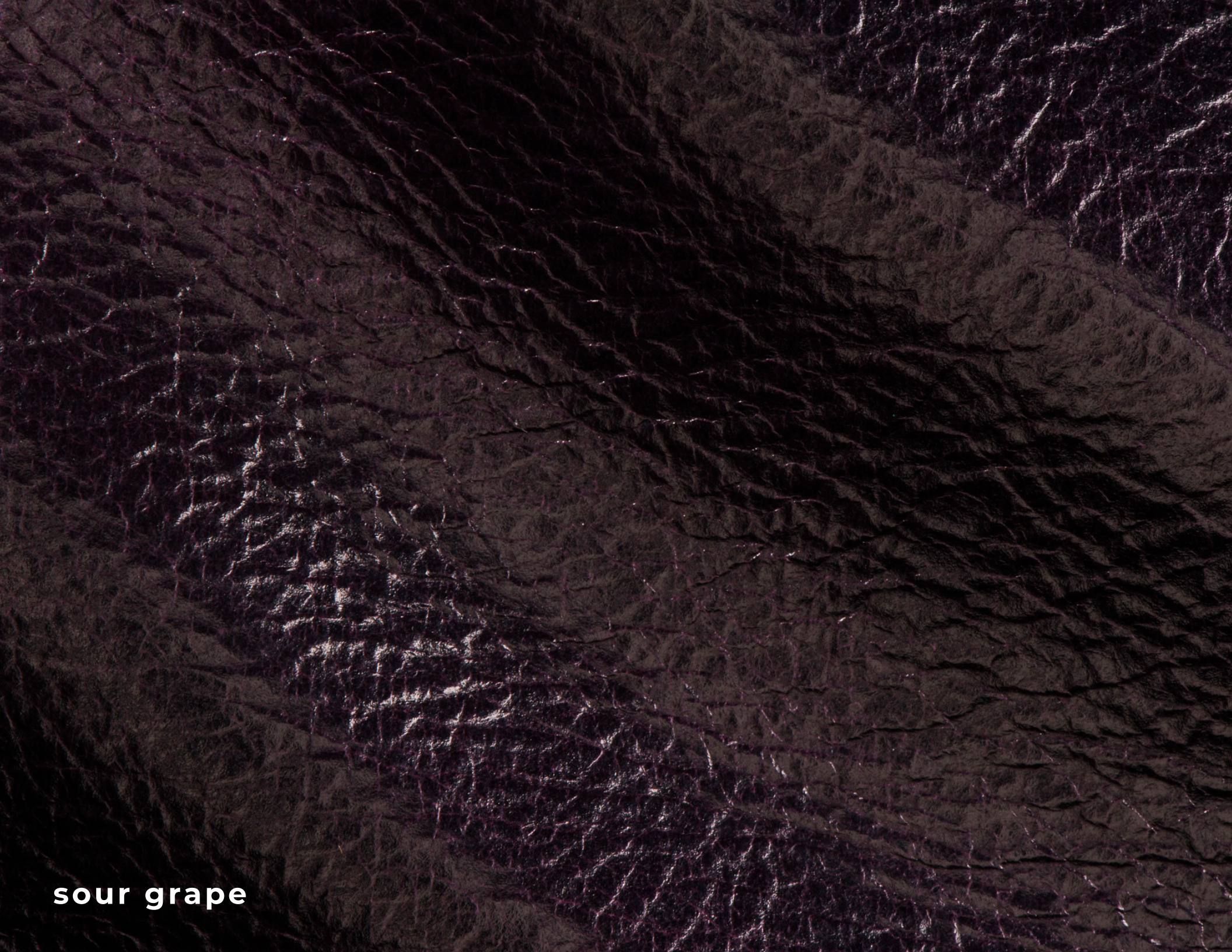
Full

Rejuvenate

Oleosa

NOTE: Due to color variations on different monitors and color printers, before making exact color and texture matches, we recommend that you request an actual sample to ensure proper color representation as many monitors and printers cannot print colors accurately. CTL Leather is not responsible for color selections made from this lookbook.

brilliant tide



sour grape

Property	Test Method	Result
Average Thickness	ISO 2589	1.2 - 1.4 mm
Color Fastness to Artificial Light (Xenotest 72hrs)	ISO 105 B 02	>3 Blue Scale
Colour Fastness to Rubbing (Dry)	EN 13336	100 cycles
Colour Fastness to Rubbing (Wet)	EN 13336	50 cycles
Finishing Adhesion	ISO 11644	Min 2 N/cm
Flexing Endurance (after 20,000 cycles)	ISO 5402	No Damage
Cigarette Ignition Resistance	UFAC/NFPA 260	Class 1
Ignitability BS 5852-1 (Cigarette)	BS 5852:1 EN 1021:1	Pass
Ignitability BS 5852-2 (Match)	BS 5852:1 EN 1021:2	Pass
Ignitability BS 5852-5 (Wooden Crib)	BS 5852-5	Treatable
California Technical Bulletin 117	Cal Tech Bulletin 117-2013	Pass
Boston Fire Dept	BFD IX-1	Pass