



CTL LEATHER  
A Garrett Leather Company

# POMEII WAVES

**VEG TAN LEATHER**

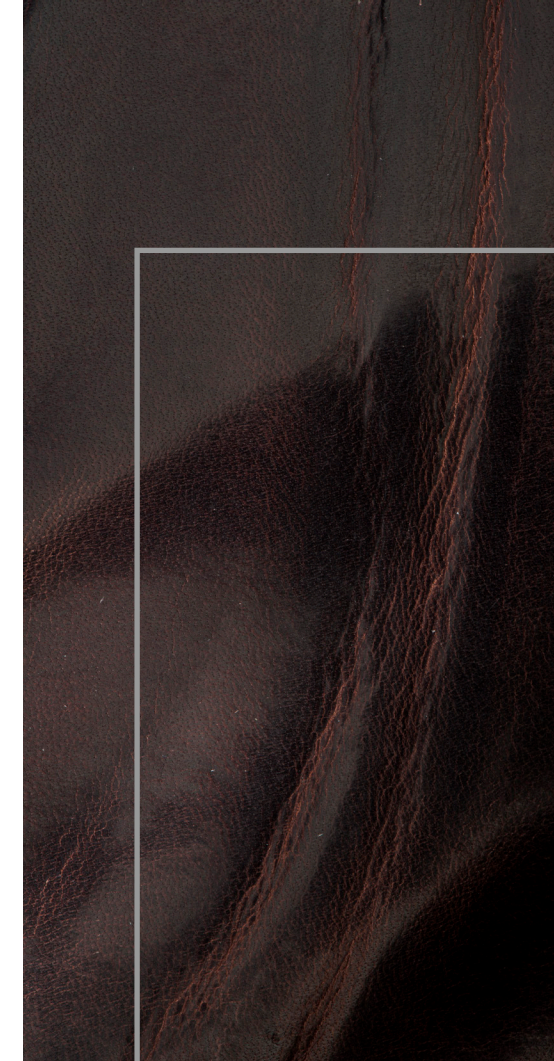
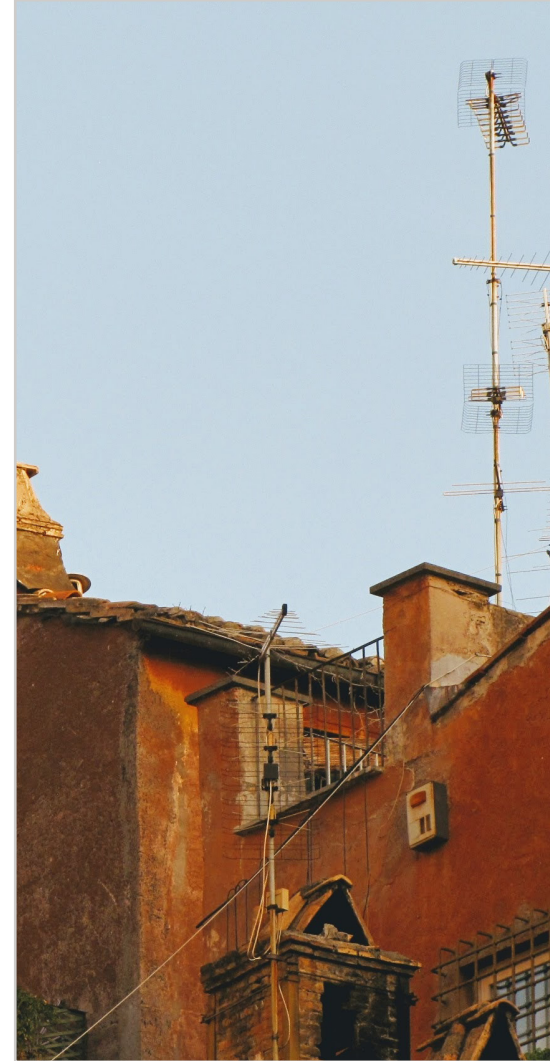
This ancient Roman city-inspired collection is an aniline leather further refined with a wave styled embossment.

viola

Strong, pliable and fully conditioned, Pompeii is an aniline leather with a special treatment of oils, waxes and tallows.



**cognac**



**t. moro**



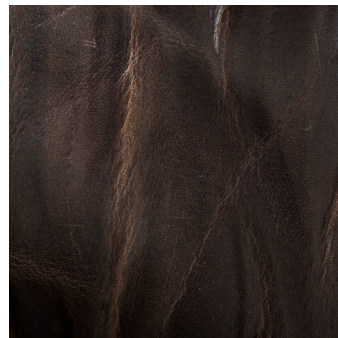
**taupe**



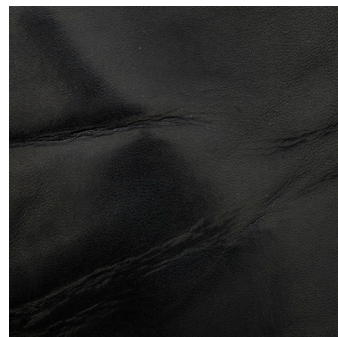
taupe



steel



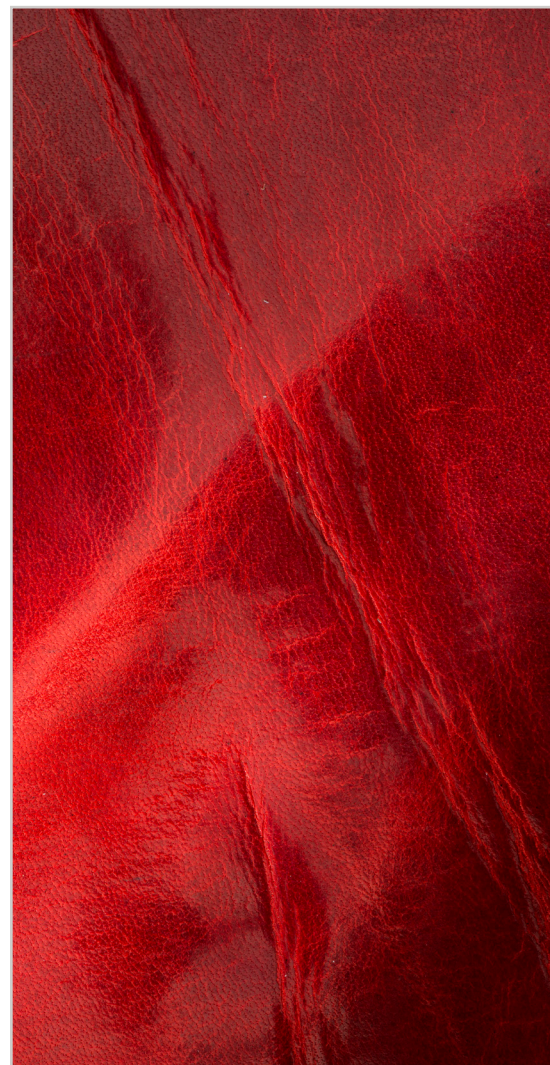
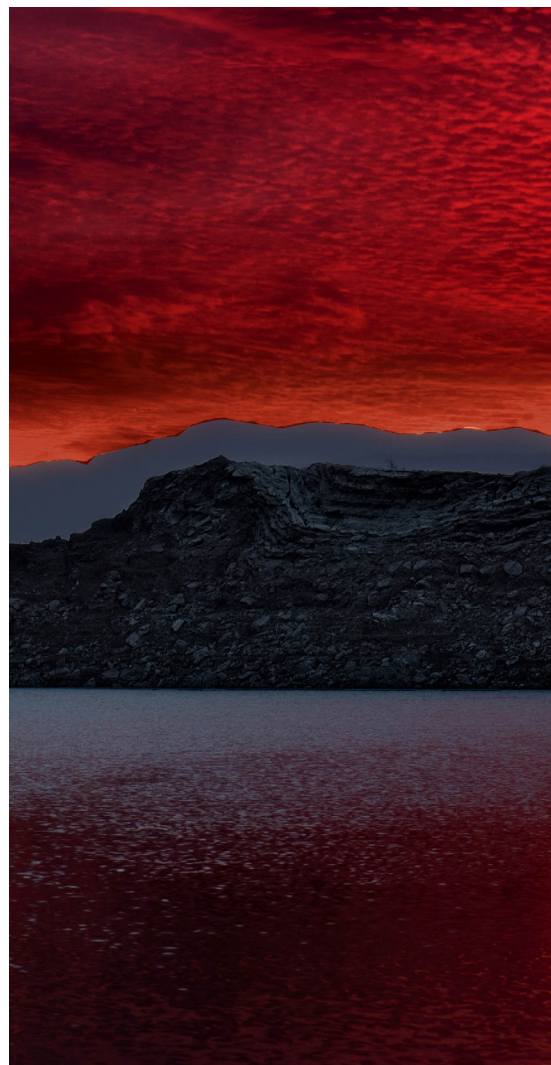
nero



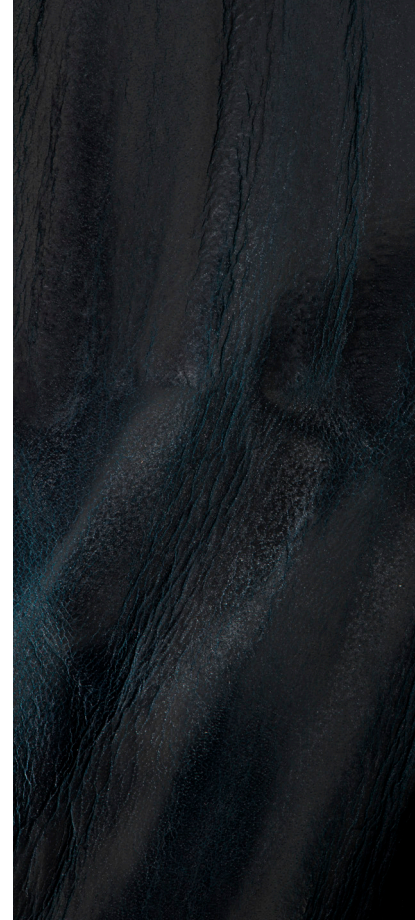
# NATURAL PATINAS

An excellent slick surface feel, along with a light pull up creates a beautiful two-tone effect and will become lighter in areas of heavy use. The natural patinas that develop will only get better with age, taking on a beautiful aged look over the years.

With natural vegetable tanned leathers, depending on the environment and frequency to which the leather is exposed, you can expect such leathers will darken if exposed to water and oils, dirt, denim, etc, whereas they will lighten when exposed to extended sunlight. It is best to avoid direct heat as this may cause narrowing or cracking of the leather's surface.



**rosso**



**blu**

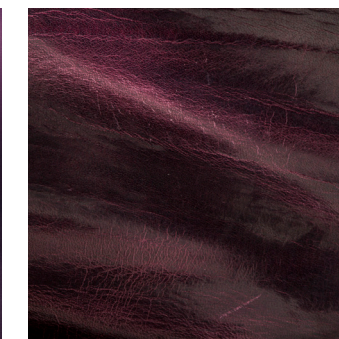
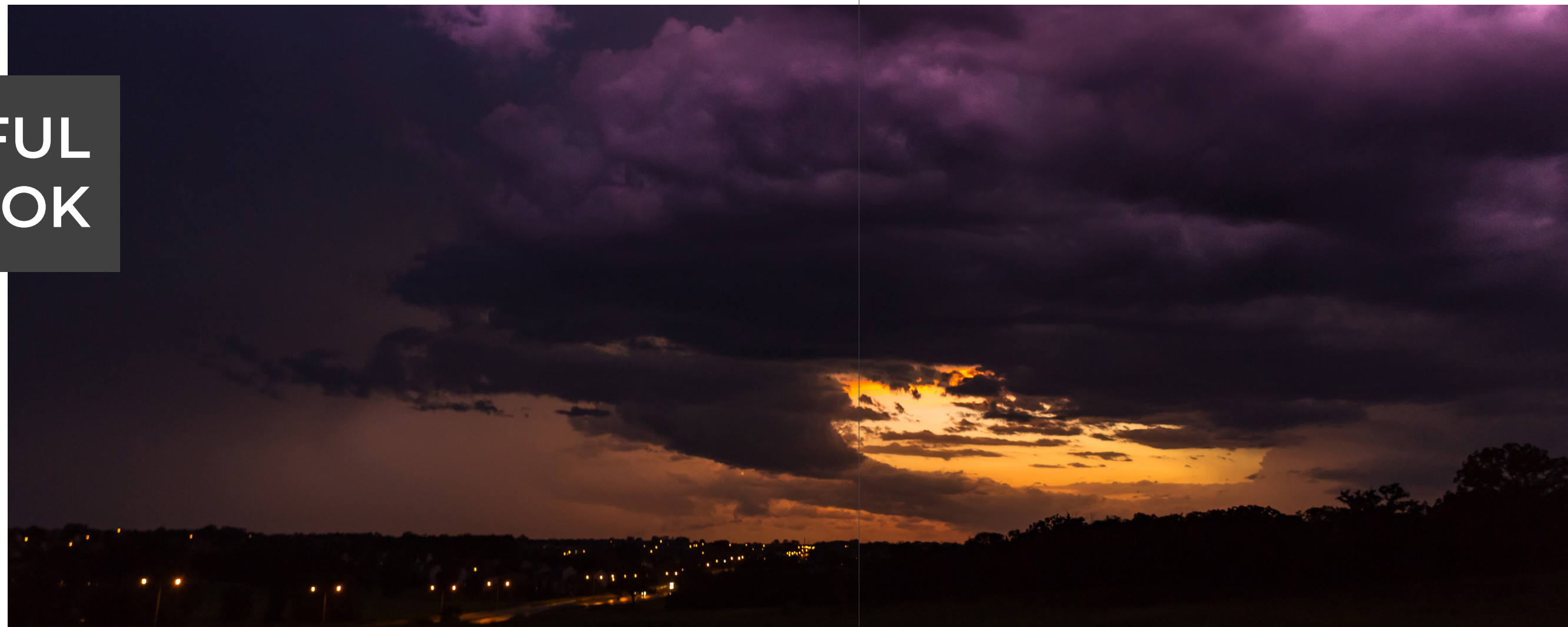


**cognac**

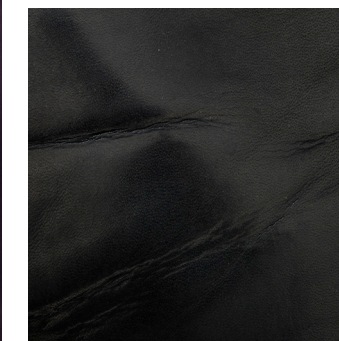
**ANILINE LEATHER WITH A SPECIAL TREATMENT OF OILS, WAXES AND TALLOW**

# BEAUTIFUL AGED LOOK

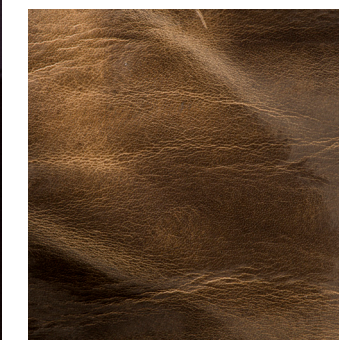
Stocked in a weight of 3.5oz to 4.0oz , this leather is also available in small bespoke orders of weights ranging from 4oz to 6oz.



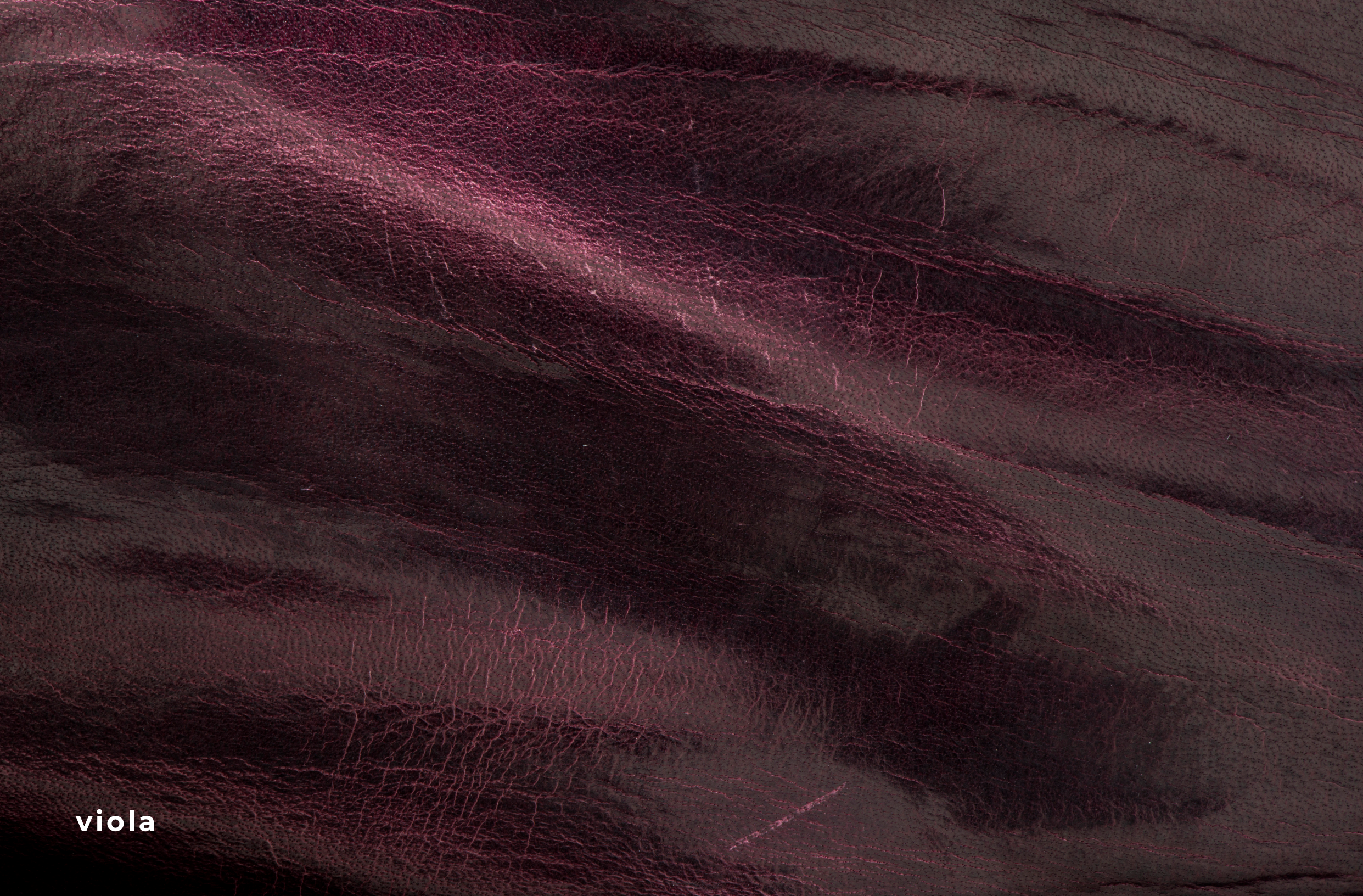
**viola**



**nero**



**taupe**



viola



Blu



Rosso



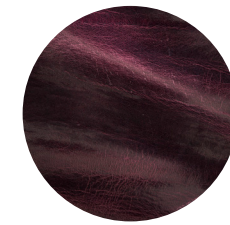
T. Moro



Cognac



Steel



Viola



Nero



Taupe

---

**Content**

Veg Tan

**Finish**

Aniline, Oil Pull Up

**Raw Material**

European

**Average Hide Size**

12-20 sq ft (Shoulders)

*Leather is a natural product. Distinctive markings and nuances in its texture and colour are natural in occurrence and a testament to its authenticity.*

*Cuttings for approval (CFAs) are recommended for this leather. Expect slight color variation from dye lot to dye lot.*

*NOTE: Due to color variations on different monitors and color printers, before making exact color and texture matches, we recommend that you request an actual sample to ensure proper color representation as many monitors and printers cannot print colors accurately. CTL Leather is not responsible for color selections made from this lookbook.*